

## ER1451 Epoxy Resin

ER1451 is a fast curing epoxy resin of low viscosity. The cured resin has found application for potting radio frequency transmitter devices. The system is clear and may be supplied in bulk, kit or resin pack form.

- Good electrical properties; used for encapsulating radio frequency transmitter devices
- Low viscosity; ideal for applications with complex geometries and small spacing
- Good thermal cycling characteristics; offers stability in applications with temperature variables
- Fast curing system; suitable for high throughput applications

<b>Approvals</b>	<b>RoHS-2 Compliant (2011/65/EU):</b>	<b>Yes</b>
	<b>UL Approval:</b>	<b>No</b>

### Typical Properties

Liquid Properties:	Base Material	Epoxy
	Density Part A - Resin (g/ml)	1.09
	Density Part B - Hardener (g/ml)	0.95
	Part A Viscosity (mPa s 23°C)	200
	Part B Viscosity (mPa s 23°C)	300
	Mix Ratio (Weight)	2.41:1
	Mix Ratio (Volume)	2.10:1
	Mixed System Viscosity (mPa s 23°C)	250
	Usable Life (20°C)	20 minutes
	Gel Time (25°C)	30 minutes
	Cure Time (25°C)	12 hours
	Cure Time (80°C)	2 hours
	Cure Time (100°C)	30 minutes
	Colour Part A - Resin	Clear
	Colour Part B - Hardener	Amber
	Storage Conditions	Dry Conditions: Above 15°C, Below 30°C
	Shelf Life	24 Months

#### Copyright Electrolube 2013

All information is given in good faith but without warranty. Properties are given as a guide only and should not be taken as a specification.

Electrolube cannot be held responsible for the performance of its products within any application determined by the customer, who must satisfy themselves as to the suitability of the product.

Ashby Park, Coalfield Way,  
Ashby de la Zouch,  
Leicestershire LE65 1JR

T +44 (0)1530 419 600

F +44 (0)1530 416 640

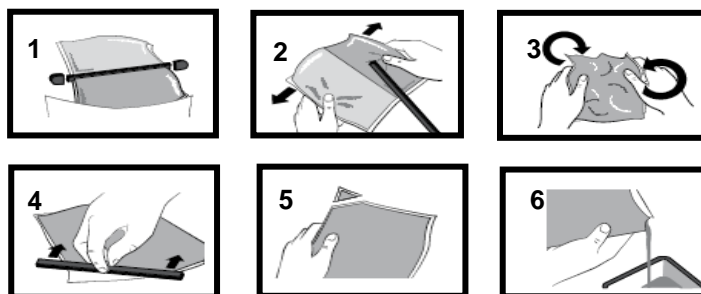
BS EN ISO 9001:2008  
Certificate No. FM 32082

Cured System:	Thermal Conductivity (W/m.K)	0.20
	Cured Density (g/ml)	1.05
	Temperature Range (°C)	-50 to +130
	Max Temperature Range (Short Term (°C)/30 Mins) (Application and Geometry Dependent)	+150
	Dielectric Strength (kV/mm)	12
	Volume Resistivity (ohm-cm)	10 <sup>14</sup>
	Shore Hardness	D50
	Colour (Mixed System)	Clear Amber
	Flame Retardancy	No
	Tensile Strength (MPa)	30-35
	Compressive Strength (MPa)	60
	Deflection Temperature (°C)	35
	Coefficient of Expansion (ppm/°C)	80
	Loss Tangent @ 50 Hz	0.01
	Permittivity @ 50 Hz	4.0
	Comparative Tracking Index	Not Measured
	Water Absorption (9.7mm thick disk, 51mm diameter) 10 days @ 20°C / 1 hour @ 100°C	0.5% / 1.0%
	Elongation At Break	2.0%

## **Mixing Procedures**

### **Resin Packs**

When in Resin pack form, the resin and hardener are mixed by removing the clip and moving the contents around inside the pack until thoroughly mixed. To remove the clip, remove both end caps, grip each end of the pack and pull apart gently. By using the removed clip, take special care to push unmixed material from the corners of the pack. Mixing normally takes from two to four minutes depending on the skill of the operator and the size of the pack. Both the resin and hardener are evacuated prior to packing so the system is ready for use immediately after mixing. The corner may be cut from the pack so that it may be used as a simple dispenser.



### **Bulk Mixing**

When mixing, care must be taken to avoid the introduction of excessive amounts of air. Automatic mixing equipment is available which will not only mix both the resin and hardener accurately in the correct ratio but do this without introducing air. Containers of Part A (Resin) and Part B (Hardener) should be kept sealed at all times when not in use to prevent the ingress of moisture. Bulk material must be thoroughly mixed before use. Incomplete mixing will result in erratic or partial curing.

### **Additional Information**

- Cleaning:** It is far easier for machines & containers to be cleaned before the resin has been allowed to cure. Electrolube's RRS is suitable for cleaning machines and containers and cured resin may be slowly softened and removed by soaking in our RRS.
- Curing:** Do not heat cure large volumes immediately. Allow these to gel at room temperature and post-cure at high temperature if required (refer to liquid properties for details). Small volumes (250ml) may be heat cured immediately.
- Storage:** When storing under very cold conditions, the hardener may crystallise. If this occurs, simply warm (40°C) the container gently until all crystals have re-melted.
- Health & Safety:** Always refer to the Health & Safety data sheet before use. These can be downloaded from [www.electrolube.com](http://www.electrolube.com)

Revision 1: April 2014

#### **Copyright Electrolube 2013**

All information is given in good faith but without warranty. Properties are given as a guide only and should not be taken as a specification.

Electrolube cannot be held responsible for the performance of its products within any application determined by the customer, who must satisfy themselves as to the suitability of the product.

Ashby Park, Coalfield Way,  
Ashby de la Zouch,  
Leicestershire LE65 1JR  
T +44 (0)1530 419 600  
F +44 (0)1530 416 640  
BS EN ISO 9001:2008  
Certificate No. FM 32082