

ER1452 Epoxy Resin

ER1452 is a fast curing epoxy resin with thixotropic properties. The cured product is tough and exhibits good adhesion to a variety of substrates.

- High viscosity; reduced flow to avoid resin migration and capillary action during processing
- Excellent adhesion to a wide variety of substrates; good thermal cycling characteristics
- Simple mix ratio and fast cure time; aids efficient production processes
- Good electrical properties and low water absorption

Approvals	RoHS-2 Compliant (2011/65/EU): UL Approval:	Yes No
Liquid Properties:	Base Material	Epoxy
	Density Part A - Resin (g/ml)	1.16
	Density Part B - Hardener (g/ml)	0.99
	Mix Ratio (Weight)	1.21:1
	Mix Ratio (Volume)	1.03:1
	Mixed System Viscosity	Semi-thixotropic
	Gel Time (25°C)	15-20 minutes
	Cure Time (25 °C)	12 hours
	Cure Time (80 °C)	2 hours
	Colour Part A - Resin	Semi-transparent liquid
	Colour Part B - Hardener	Amber to dark liquid
	Storage Conditions	Dry Conditions: Above 15°C, Below 30°C
	Shelf Life	24 Months (Bulk)
Cured System:	Cured Density (g/ml)	1.08
	Temperature Range (°C)	-50 to +130
	Max Temperature Range (Short Term (°C)/30 Mins) (Application and Geometry Dependent)	+150
	Dielectric Strength (kV/mm)	12
	Volume Resistivity (ohm-cm)	10 ¹⁴
	Shore Hardness	D50
	Colour (Mixed System)	Semi-Transparent Amber
	Loss Tangent @ 50 Hz	0.01
	Permittivity @ 50 Hz	4.0
	Water Absorption (9.7mm thick disk, 51mm diameter) 10 days @ 20°C / 1 hour @ 100°C	0.5% / 1.0%

Copyright Electrolube 2013

All information is given in good faith but without warranty. Properties are given as a guide only and should not be taken as a specification.

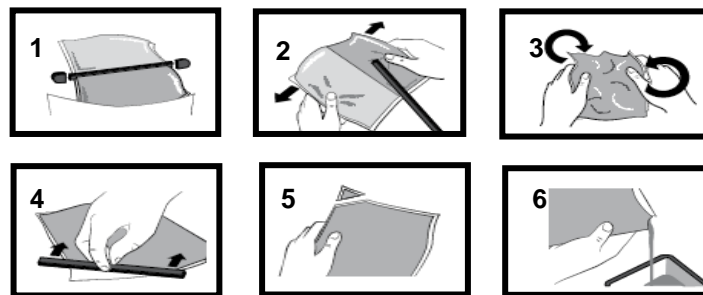
Electrolube cannot be held responsible for the performance of its products within any application determined by the customer, who must satisfy themselves as to the suitability of the product.

Ashby Park, Coalfield Way,
 Ashby de la Zouch,
 Leicestershire LE65 1JR
 T +44 (0)1530 419 600
 F +44 (0)1530 416 640
 BS EN ISO 9001:2008
 Certificate No. FM 32082

Mixing Procedures

Resin Packs

When in Resin pack form, the resin and hardener are mixed by removing the clip and moving the contents around inside the pack until thoroughly mixed. To remove the clip, remove both end caps, grip each end of the pack and pull apart gently. By using the removed clip, take special care to push unmixed material from the corners of the pack. Mixing normally takes from two to four minutes depending on the skill of the operator and the size of the pack. Both the resin and hardener are evacuated prior to packing so the system is ready for use immediately after mixing. The corner may be cut from the pack so that it may be used as a simple dispenser.



Bulk Mixing

When mixing, care must be taken to avoid the introduction of excessive amounts of air. Automatic mixing equipment is available which will not only mix both the resin and hardener accurately in the correct ratio but do this without introducing air. Containers of Part A (Resin) and Part B (Hardener) should be kept sealed at all times when not in use to prevent the ingress of moisture. Bulk material must be thoroughly mixed before use. Incomplete mixing will result in erratic or partial curing.

Additional Information

- Cleaning:** It is far easier for machines & containers to be cleaned before the resin has been allowed to cure. Electrolube's RRS is suitable for cleaning machines and containers and cured resin may be slowly softened and removed by soaking in our RRS.
- Curing:** Do not heat cure large volumes immediately. Allow these to gel at room temperature and post-cure at high temperature if required (refer to liquid properties for details). Small volumes (250ml) may be heat cured immediately.
- Storage:** When storing under very cold conditions, the hardener may crystallise. If this occurs, simply warm (40°C) the container gently until all crystals have re-melted.
- Health & Safety:** Always refer to the Health & Safety data sheet before use. These can be downloaded from www.electrolube.com

Revision 1: Apr 2014